

**RIVERDALE MUNICIPALITY
BY-LAW NO. 2019-02**

Being a By-law of Riverdale Municipality to amend the Riverdale Municipality Zoning By-law No. 2016-12, as amended.

WHEREAS Section 80 of *The Planning Act* allows Council to amend a zoning by-law in accordance with Sections 74 to 79 of that Act.

AND WHEREAS the Council of Riverdale Municipality deem it expedient and in the best interest of the corporation to amend the Riverdale Municipality Zoning By-law as amended.

NOW THEREFORE the Council of the Riverdale Municipality, in meeting duly assembled, enacts as follows:

THAT Riverdale Municipality Zoning By-law No. 2016-12 as amended, is hereby further amended as follows:

1. Map Amendments

Zoning Maps 2 and 5 - attached to forming part of Riverdale Municipality Zoning By-law No. 2016-12, are hereby further amended in order that lands described as follows:

Part of the SE ¼ Section 18-12-21WPM in Riverdale Municipality as shown outlined in a heavy dashed line on a map attached hereto and marked as Appendix "A" and forming part of the amending By-law No. 2019-02.

Be Re-Zoned:

FROM: "RA" – Rural/Agriculture Zone

TO: "MR" – Rural Industrial Zone

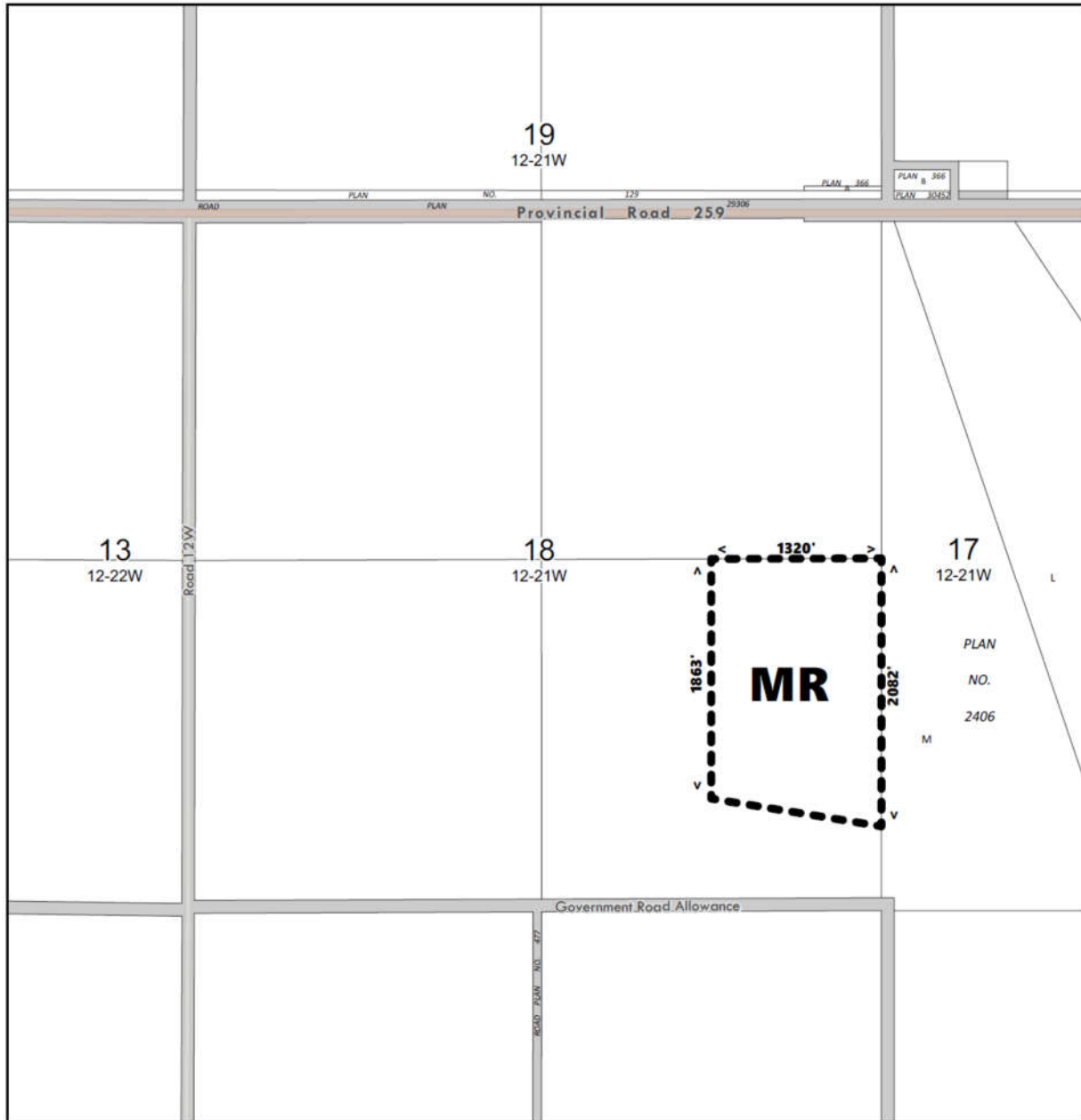
DONE and PASSED as a By-law of Riverdale Municipality at Rivers, Manitoba in the Province of Manitoba this 5th day of February, 2019.

Original signed by T. Gill
Mayor

Original signed by K. Bridgeman
Chief Administrative Officer

Read a first time this	<u>2nd</u>	day of	<u>January</u>	A.D.	<u>2019</u>
Read a second time this	<u>5th</u>	day of	<u>February</u>	A.D.	<u>2019</u>
Read a third time this	<u>5th</u>	day of	<u>February</u>	A.D.	<u>2019</u>


RIVERDALE MUNICIPALITY BY-LAW NO. 2019-02



Appendix "A"

Attached to By-Law No. 2018-13 of Riverdale Municipality amending Zoning Maps 2 and 5 of By-Law 2016-12 being the Riverdale Municipality Zoning By-Law as amended

Pt. SE 18-12-21 WPM

 Limit of area affected

From: "RA" Rural/Agriculture Zone
To: "MR" Rural Industrial Zone



Map: 2018-13
Date: 2018-12-21

Manitoba 
Department of Municipal Relations
Community and Regional Planning